



# straw, valve and mealtime cups

## INSTRUCTIONS FOR USE

### STRAW CUPS:



Wearing Straw



Training Straw



Active Straw

### VALVE CUPS:



Wearing Sippee



Training Sippee



Active Sippee



Active Sports Bottle

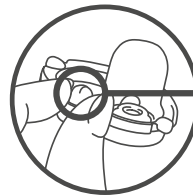
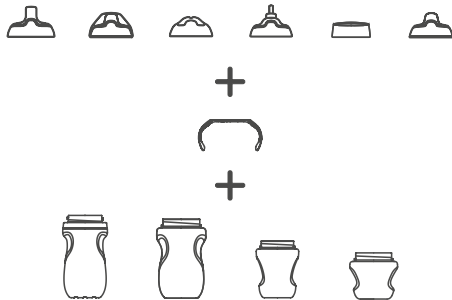
### MEALTIME CUPS:



Mealtime Trainers

### OUR NEW CUP RANGE IS INTERCHANGEABLE

No matter what handle, lid or cup you decide to use in our NEW range, everything will fit together.



Ensure the cut opens by squeezing before use.

### SAFETY GUIDANCE

For your child's safety and health.

#### WARNING!

- Always use this product with adult supervision. Accidents have occurred when babies have been left alone with drinking equipment due to the baby falling or if the product has disassembled.
- Never use spouts or straws as a soother. Continuous and prolonged sucking of fluids will cause tooth decay. Tooth decay in young children can occur even when non-sweetened fluids are used. This can occur if the baby is allowed to use the cup for long periods through the day and particularly through the night, when saliva flow is reduced or if it is used as a soother.
- Always check food temperature before feeding.
- Always stir heated food to ensure even heat distribution and test temperature before serving.
- Keep all components not in use out of reach of children.

### CLEANING AND STERILISATION

- Before first use, clean the product.
- Clean before each use.
- Always wash the product immediately after use.
- Wash in warm soapy water and rinse in clean water or use a dishwasher (top shelf only). Do not clean with solvents or harsh chemicals.
- Do not allow product to come into contact with oil based foods (e.g. oil/tomato based sauces) as staining will occur.
- Our insulated cups are suitable for sterilisation by cold water tablet/liquid solution only.
- All other cups are suitable for sterilisation by steam (electric and microwave), boiling or cold water tablet/liquid solution.

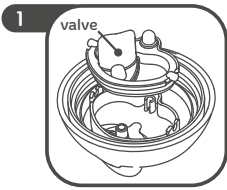
### STORAGE AND USE

- Inspect before each use and pull the spout or straw in all directions.
- Throw away at the first signs of damage or weakness.
- Do not store or leave in direct sunlight or near a source of heat.
- Do not store with or allow to come into contact with solvents or harsh chemicals.
- Not suitable for use in a convectional oven or a combination microwave oven with the grill feature switched on.
- Not suitable for microwave use apart from sterilising. See cleaning and sterilisation instructions below.
- As with most sippy cups, ours are to be used with milk, water or juices that don't contain pulp.
- DO NOT use with fizzy (carbonated) beverages, formula or hot liquids.

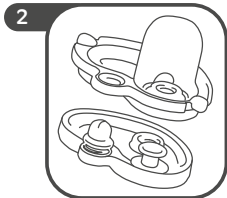
## INSTRUCTIONS FOR CLEANING VALVE CUPS

You should thoroughly clean your valve after each use.

### DISASSEMBLE



- Un-screw the lid
- Pull out the valve



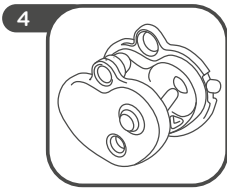
- Separate the 2 parts of the valve (soft & hard)

### CLEAN

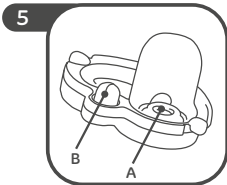
3

- Wash all parts thoroughly in warm soapy water and rinse in clear water
- All parts can be washed in the dishwasher (top shelf only)
- Always shake parts after washing to remove excess water and leave to air dry before reassembling

### REASSEMBLE

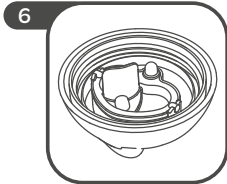


- Align the two parts and press together AS PER ILLUSTRATION



### WARNING

- Ensure parts **A** and **B** of the soft side are pushed through the holes of the hard side. Ensure the cut **B** opens by squeezing before use.

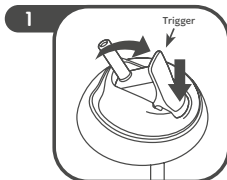


- Place the valve back in the lid, and push until the sides lock into place
- Screw on lid

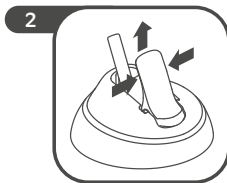
## INSTRUCTIONS FOR CLEANING STRAW CUPS

You should thoroughly clean your straw after each use.

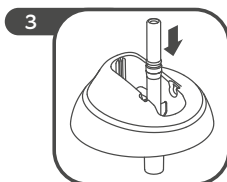
### DISASSEMBLE



- Remove lid from cup base
- Pop up the straw by pressing the trigger



- Remove the trigger from the lid (wiggle left to right to release)
- Pull the trigger from the straw



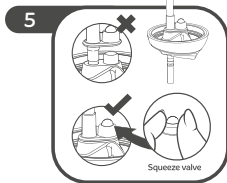
- Pull the straw downwards and out from the lid

### CLEAN

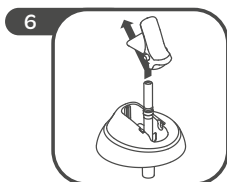
4

- Wash all parts thoroughly in warm soapy water and rinse in clear water
- All parts can be washed in the dishwasher (top shelf only)
- Always shake parts after washing to remove excess water and leave to air dry before reassembling

### REASSEMBLE



- Pull straw up through lid
- Ensure silicone valve and straw is clipped into place

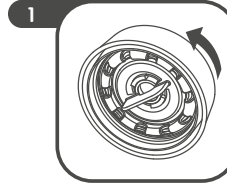


- Thread the straw back into the trigger and clip the trigger back into position.

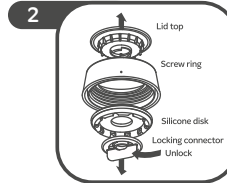
## INSTRUCTION FOR CLEANING MEALTIME CUPS

You should thoroughly clean your valve after each use.

### DISASSEMBLE



- Remove lid from cup base
- Grip lid and turn the locking connector anti-clockwise



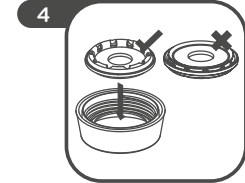
- Separate locking connector, silicone disk, screw ring and lid top

### CLEAN

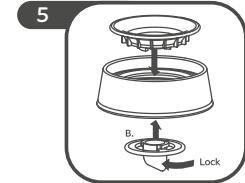
3

- Wash all parts thoroughly in warm soapy water and rinse in clear water
- All parts can be washed in the dishwasher (top shelf only)
- Always shake parts after washing to remove excess water and leave to air dry before reassembling

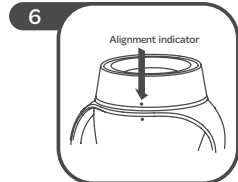
### REASSEMBLE



- Turn screw ring upside down and place silicone disk inside with grooves facing up



- Take the lid top and push down through the hole in the silicone disk
- Align locking connector and turn clockwise to lock



- Place lid on base and align the 2 dots on the back - Remember: **Do not over tighten.**

Jackel International Limited trading as Mayborn Group  
Northumberland Business Park West, Cramlington,  
Northumberland NE23 7RH, UK

Copyright © Jackel International Limited 2015.

TOMMEE TIPPEE is a registered trademark of Jackel International Limited.

Jackel International Limited retains all intellectual property rights to this product, packaging and printed or electronic media including all two and three dimensional designs, graphic images, logos and text.

Jackel International Limited is incorporated in England and Wales under company number 01894022.

Any manufacture, publication, copying, hiring, lending and reproduction of any materials is strictly prohibited and constitutes infringement.

International patent applications pending.